

RSD-60 Rotary Device

Applications

Bits and Cutters
Medical and Dental Parts
Multi-Sided Part Automation
Swiss Screw Parts
Valves and Fittings

Advanced Features and Functions

Horizontal and Vertical Mounting Capability
Intuitive On-Screen Joystick Interface
Seamless Software Integration
Rotate to Position Relative to Current Position
Rotate to Position Relative to a Coordinate System
Rotate to Position Based on Measurements
Automated Rotary Calibration
Non-Linear Calibration Saved to On-Board Memory
Ready to Mount on Micro-Vu Vertex and Excel Systems

Rotary Kit Contents

RSD-60 Rotary Device
Faceplate with Hardened Finish (Ti-Al-N)
Three-Jaw Chuck with Faceplate Adapter
Calibration Artifact and 45° Mirror Assembly
Stage Mounting Bracket
Vertical Mounting Bracket
Cables, Cable Guide, and Routing Brackets
Tools, Mounting Hardware, & Cases

RSD-60 Rotary Device Specifications

External Dimensions	95x150x80 mm
Centerline Height	60 mm
Maximum Speed	120°/second
Resolution	1.3 Arc Seconds
Accuracy	+/- 15 Arc Seconds
On Axis Capacity	1.5 Nm
Chuck Thread	M14 x 1.0
Weight	1.5 kg



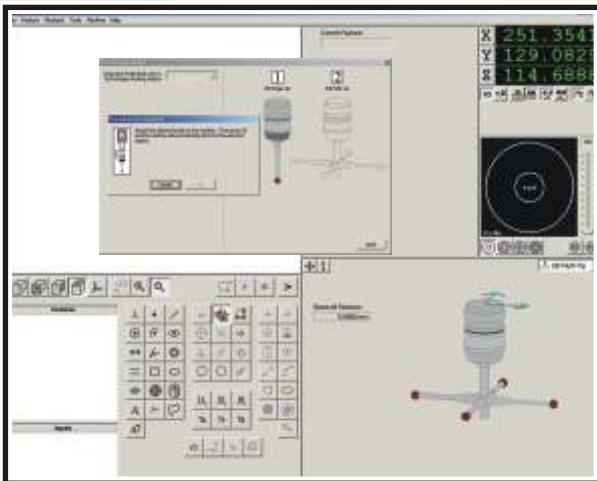
Micro-Vu Corporation

7909 Conde Lane Windsor, CA 95492 USA
Phone 707 838 6272 Fax 707 838 3985

www.microvu.com

Touch Probe Kits

**Integrate Vision and Touch Measurements
Vertex and Excel Systems are Probe-Ready
Designed with Kinematic Fixture Mounts**



InSpec's Advanced Touch Probe Functions

Intuitive Probe Assembly Interface
Automated Docking in Multi-Port Probe Change Rack
Automated Probe Tip Qualification Including Lobing
Automated Z Scale and Perpendicularity Calibration
Automatic Approach Vectoring and Solution Iteration
Automatic Retract and Adjustable Standoff Distances
FREE InSpec 2.XX Updates - No Maintenance Fees

Touch Probe Kit Contents

RENISHAW TP20 Probe Body
RENISHAW TP20 Probe Modules (2 ea.)
M2 Five Way Stylus Center
M2 Stylus (5 ea. 3 mm x 20mm)
M2 Extensions (2 ea. 10 mm, 2 ea. 20 mm, & 1 ea. 30 mm)
Multi-Port Probe Change Rack (2 or 4 Port)
Module, Stylus, and Fixture Storage Box
Micro-Vu Offset Fixture & Reference Sphere Assembly
Instructions, Tools, Mounting Hardware, Cleaning Kit, & Case



Micro-Vu Corporation

7909 Conde Lane Windsor, CA 95492 USA
Phone 707 838 6272 Fax 707 838 3985

www.microvu.com